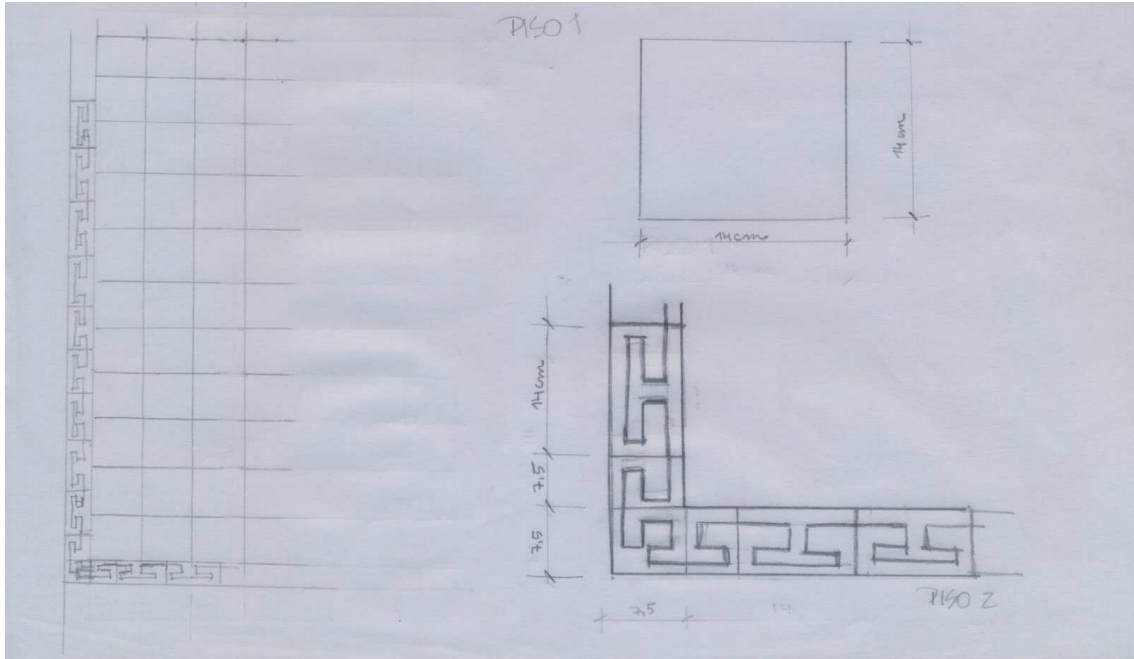
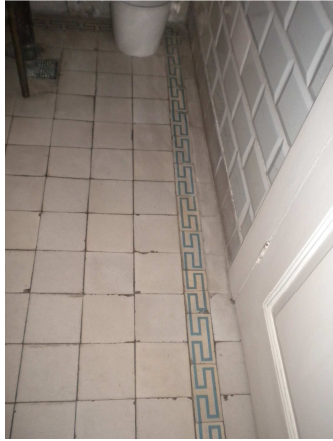


Outros desenhos:



Relatório fotográfico:



Vista do conjunto pano, tabeira e faixa



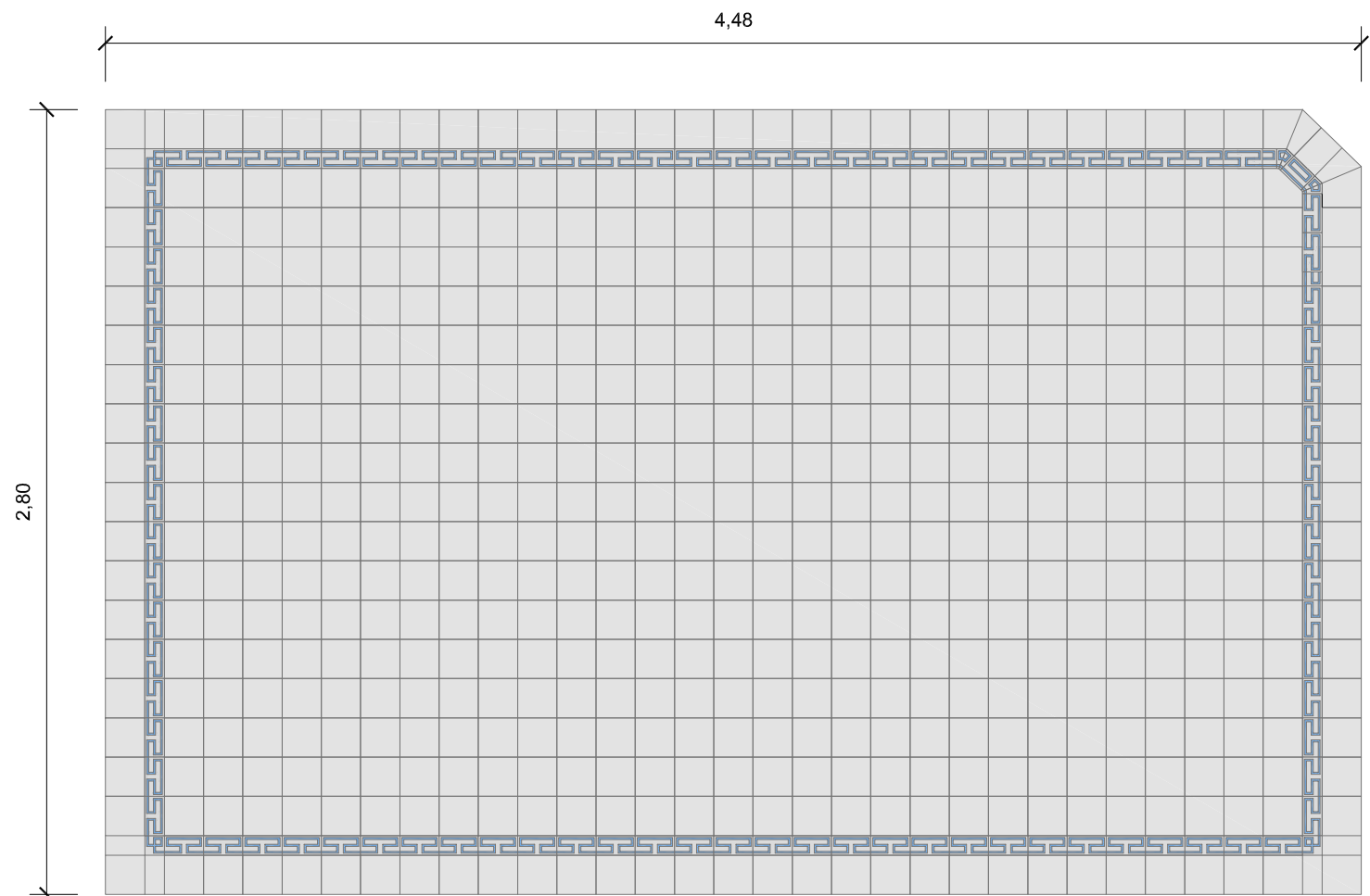
Detalhe do canto do piso



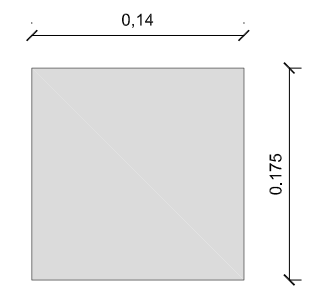
Soleira também apresenta o ladrilho hidráulico



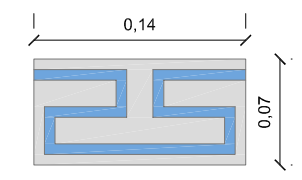
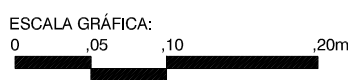
Detalhe do canto da tabeira



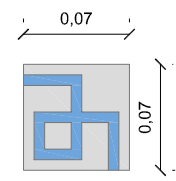
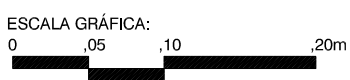
1 PAGINAÇÃO GERAL DO PISO



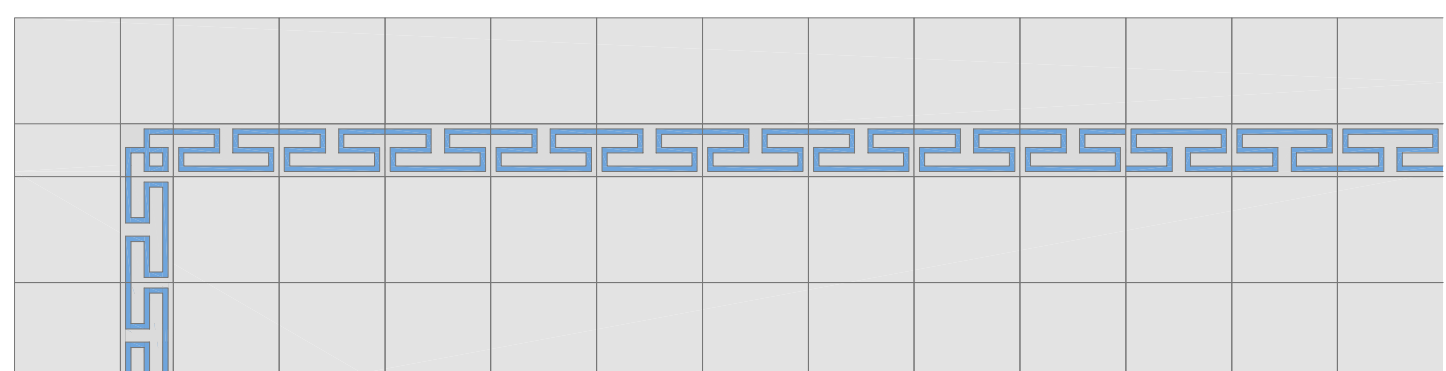
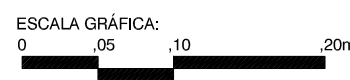
2 LADRILHO GERAL



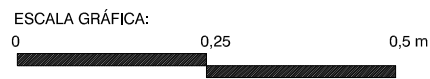
3 LADRILHO TABEIRA



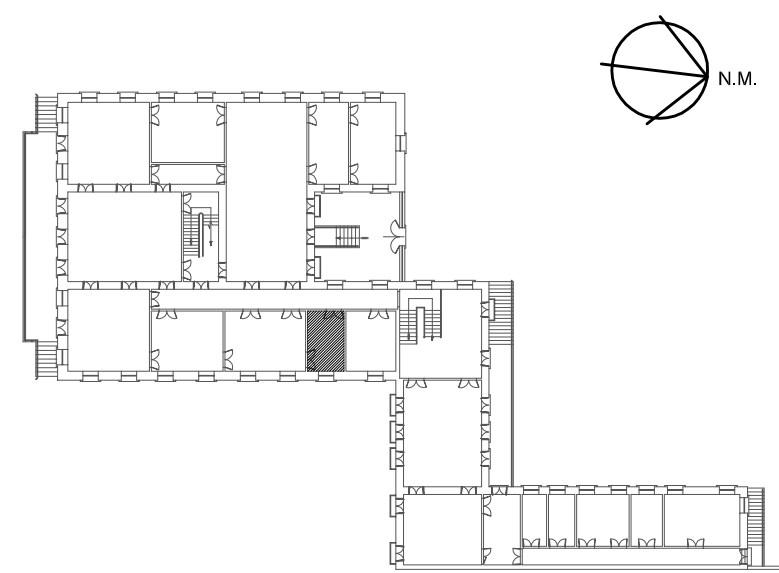
4 LADRILHO CANTO




5 TAPETE



LOCALIZAÇÃO DO BANHEIRO 01



PLANTA BAIXA 1º PAVIMENTO

REVISÃO Nº: 000	REVISÃO:	DATA:	REVISOR:
	CENTRO DE MEMÓRIA E INFORMAÇÃO NÚCLEO DE PRESERVAÇÃO ARQUITETÔNICA		Nº PRANCHA: 01/01
	LOCAL: MUSEU CASA DE RUI BARBOSA	NOME DO PROJETO: LEVANTAMENTO CADASTRAL	ETAPA DO PROJETO: DEFINITIVO
VISTO: CLAUDIA CARVALHO	TÍTULO DO PROJETO: LADRILHOS HIDRÁULICOS - BANHEIRO 01		DESENHISTA: KAROLYNA KOPPKE